



THE DESIGN AND DETAILS DISCLOSED HEREIN ARE THE EXCLUSIVE PROPERTY OF DAN WINTER ARCHITECT AND SHALL NOT BE COPIED OR REPRODUCED IN WHOLE OR IN PART WITHOUT ITS PRIOR WRITTEN CONSENT.

DAN WINTER, ARCHITECT

SUBWAY SANDWICH SHOP

2 E. Main St.
Tuttle, Ok. 73089

DAN WINTER
ARCHITECT

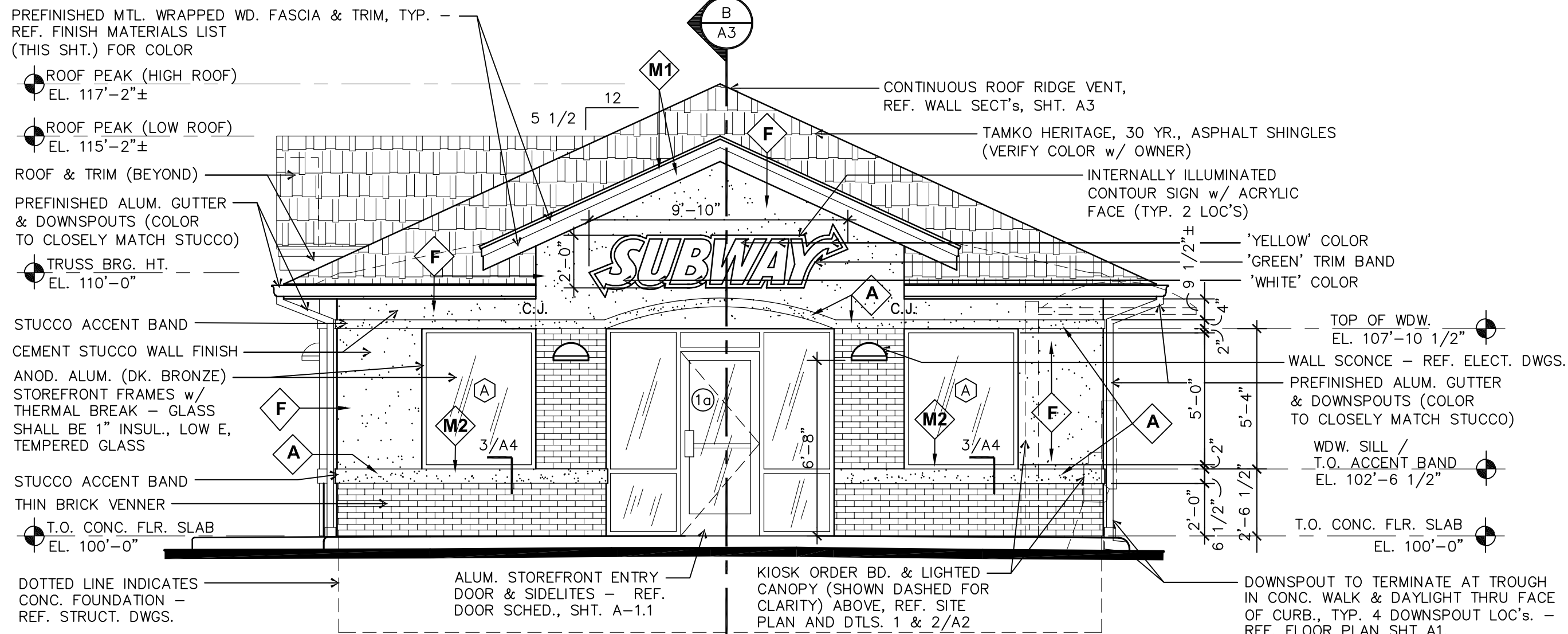
1024 EAST
FIRST STREET
WICHITA, KS.
67214
PH. 316-267-7142

EXT. ELEV'S /
FINISHES SCHED.

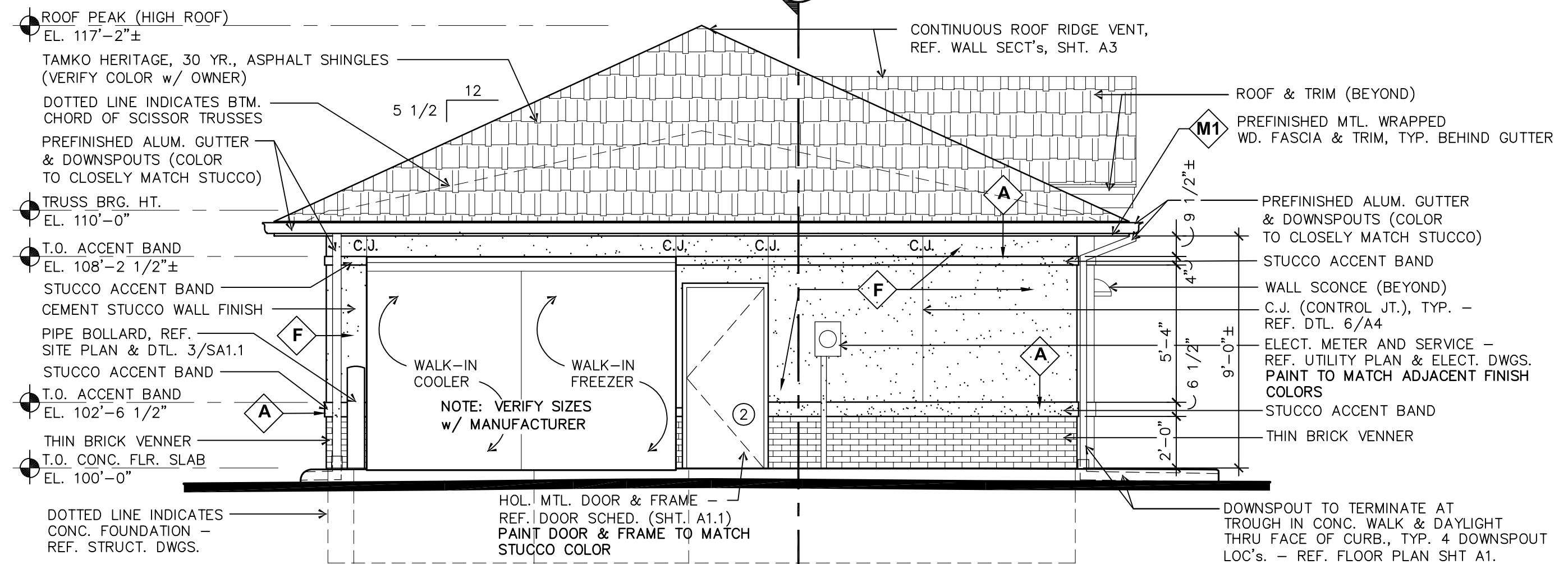
DATE
NOV. 19, 2015

DRAWN BY:
RICK C.
CHECKED BY:

SHEET NO.
A2



A WEST ELEVATION
1/8" = 1'-0"



B EAST ELEVATION
1/8" = 1'-0"

EXTERIOR FINISH MATERIALS:

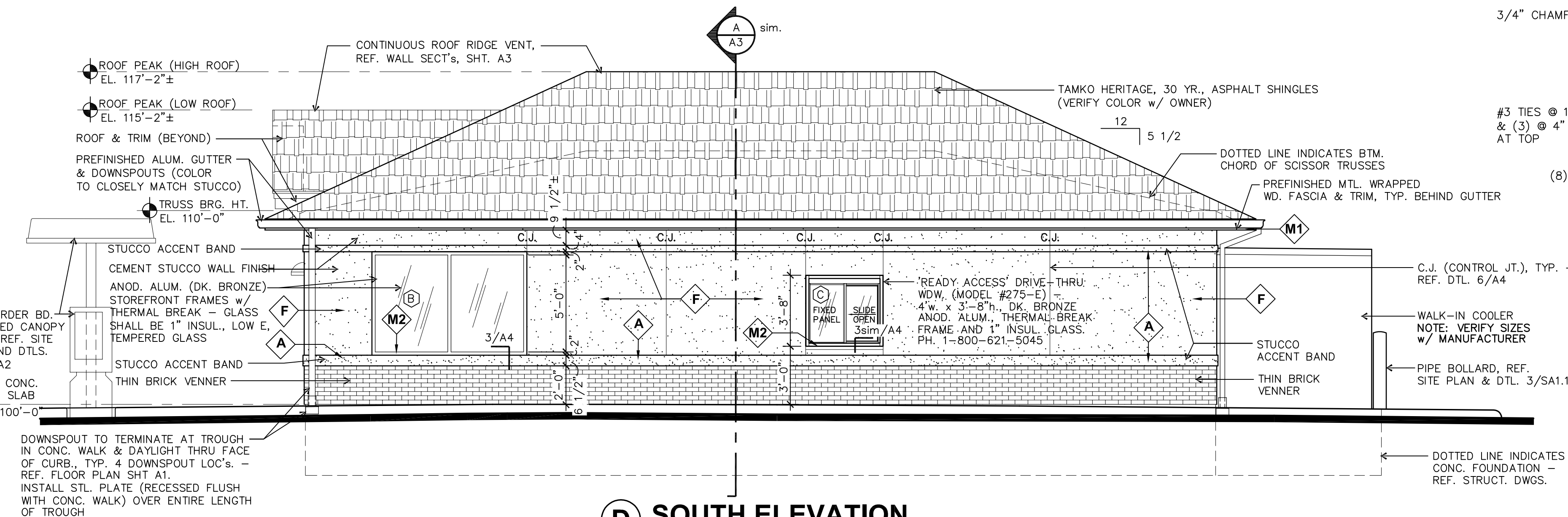
- ASPHALT COMPOSITE SHINGLE:**
TAMKO HERITAGE
COLOR: "NATURAL TIMBER"
- THIN BRICK VENEER:**
OLD BRICK ORIGINALS
COLOR: "ENGLISH PUB"
BY ROBINSON BRICK COMPANY

- STUCCO WALL FINISH:**
- F FIELD COLOR -**
TO MATCH S.W. # 6067, 'MOCHA'
 - A ACCENT COLOR -**
(ACCENT BAND ABOVE BRICK & WINDOWS)
TO MATCH S.W. # 6149, 'RELAXED KHAKI'
 - M1 WRAPPED MTL. (@ FASCIA AND TRIM BD'S):**
24 GA., PREFINISHED MTL.
COLOR: SIERRA TAN
'PAC-CLAD', BY PETERSEN ALUMINUM
 - M2 WINDOW SILL FLASH'G:**
24 GA., PREFINISHED MTL.
COLOR: SANDSTONE
'PAC-CLAD', BY PETERSEN ALUMINUM

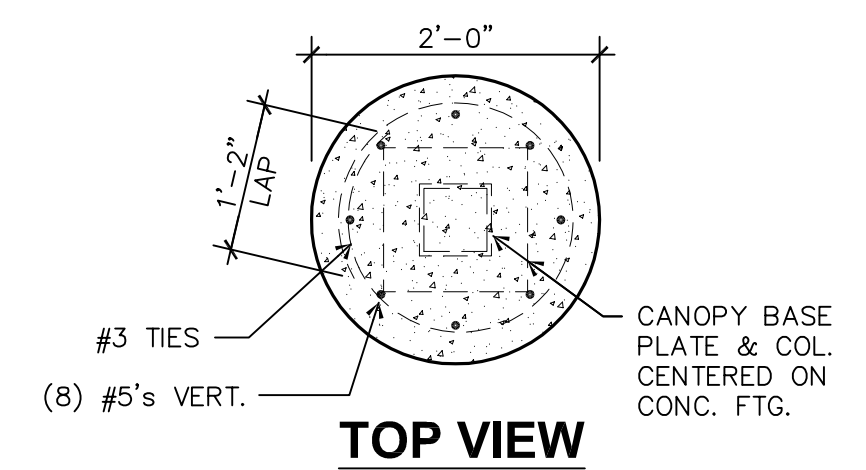
EXTERIOR BLDG. WALL SIGNAGE:
2'-6" x 12'-0"± INTERNALLY ILLUMINATED SIGN
CABINET w/ ACRYLIC FACE (TYP. 2 LOCATIONS).
'SUBWAY' LETTERING SHALL BE WHITE COLOR
ON THE 'SUB' PORTION OF THE LETTERING AND
YELLOW (PMS 109) COLOR ON THE 'WAY' PORTION
OF THE LETTERING. GREEN (PMS 554) COLOR TRIM
BAND SHALL BE PROVIDED AROUND EDGE OF ALL
LETTERS. RETURN ON SIGN SHALL BE BLACK COLOR



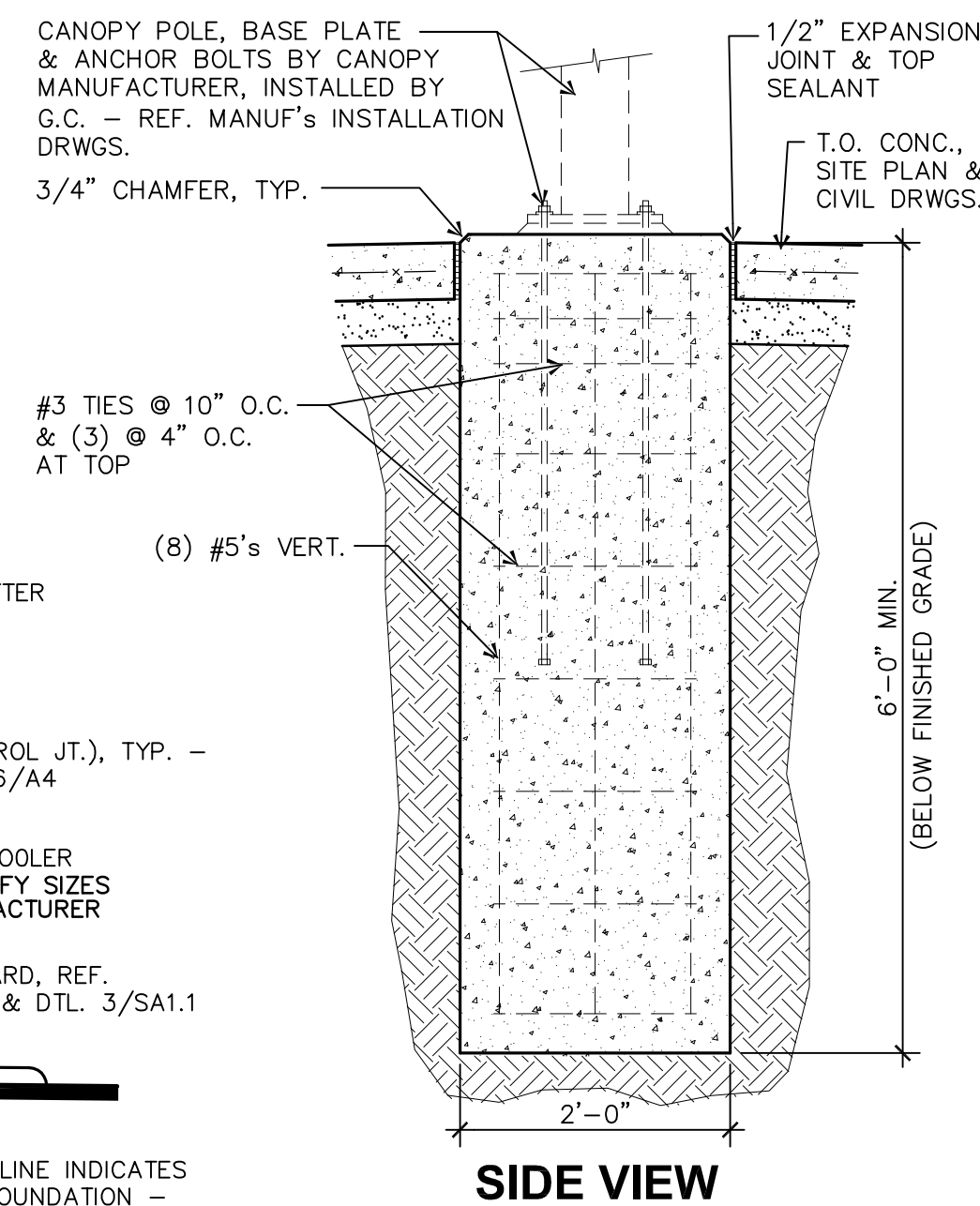
C NORTH ELEVATION
1/8" = 1'-0"



D SOUTH ELEVATION
1/8" = 1'-0"

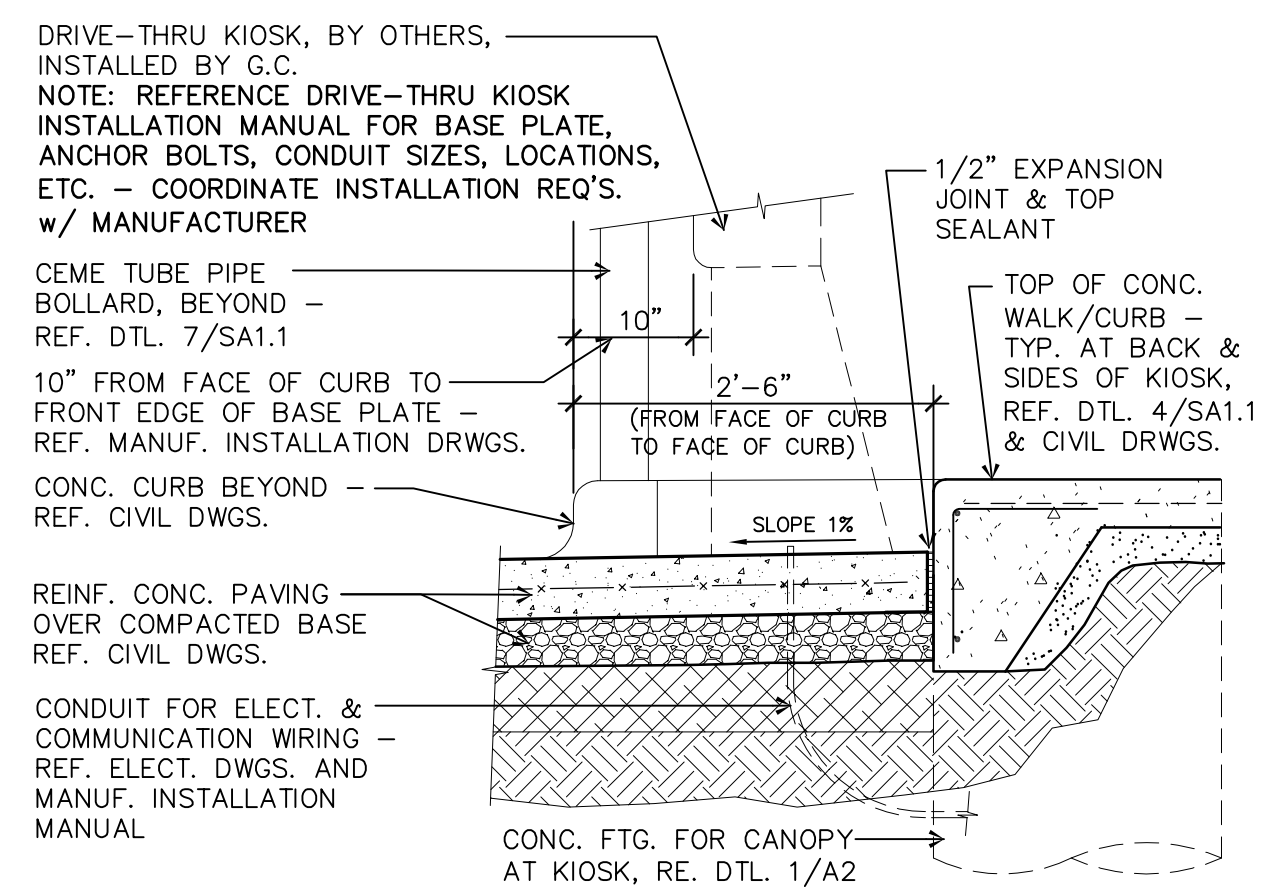


TOP VIEW

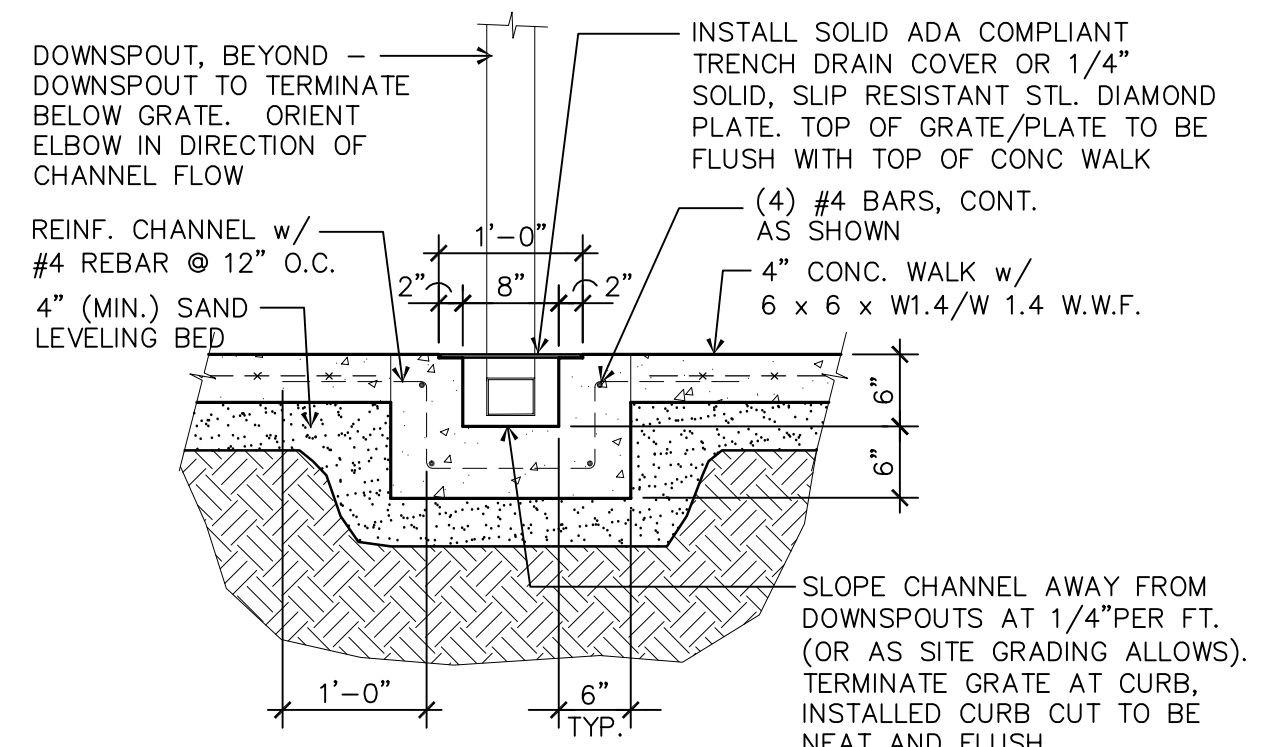


SIDE VIEW

**CONC. FTG. FOR
CANOPY @ KIOSK**
3/4" = 1'-0"



2 CONC. PAD @ KIOSK
3/4" = 1'-0"



3 CONC. DRAIN TROUGH
3/4" = 1'-0"